

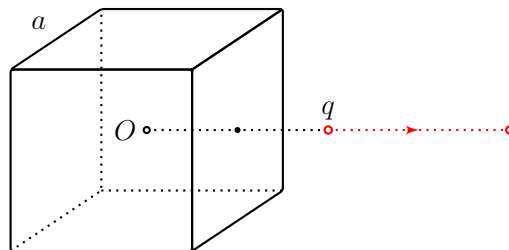


Cuba is a little piece of heaven

Cube

At a distance of $2a$ from the center of a grounded conducting solid cube with the side a on a line parallel to one of its faces and passing through the center of the other face there is a point charge q (see Fig.) The charge is slowly moved along this line so that the distance becomes equal to $6a$, performing the mechanical work of A .

What is the change in the interaction energy of the point charge with the induced charges on the surface of the cube? (10 points)



Author: L.M. Koldunov

First hint — 04.05.2020 14:00 (Moscow time)

Second hint — 06.05.2020 14:00 (Moscow time)

Final of the second round — 08.05.2020 22:00 (Moscow time)